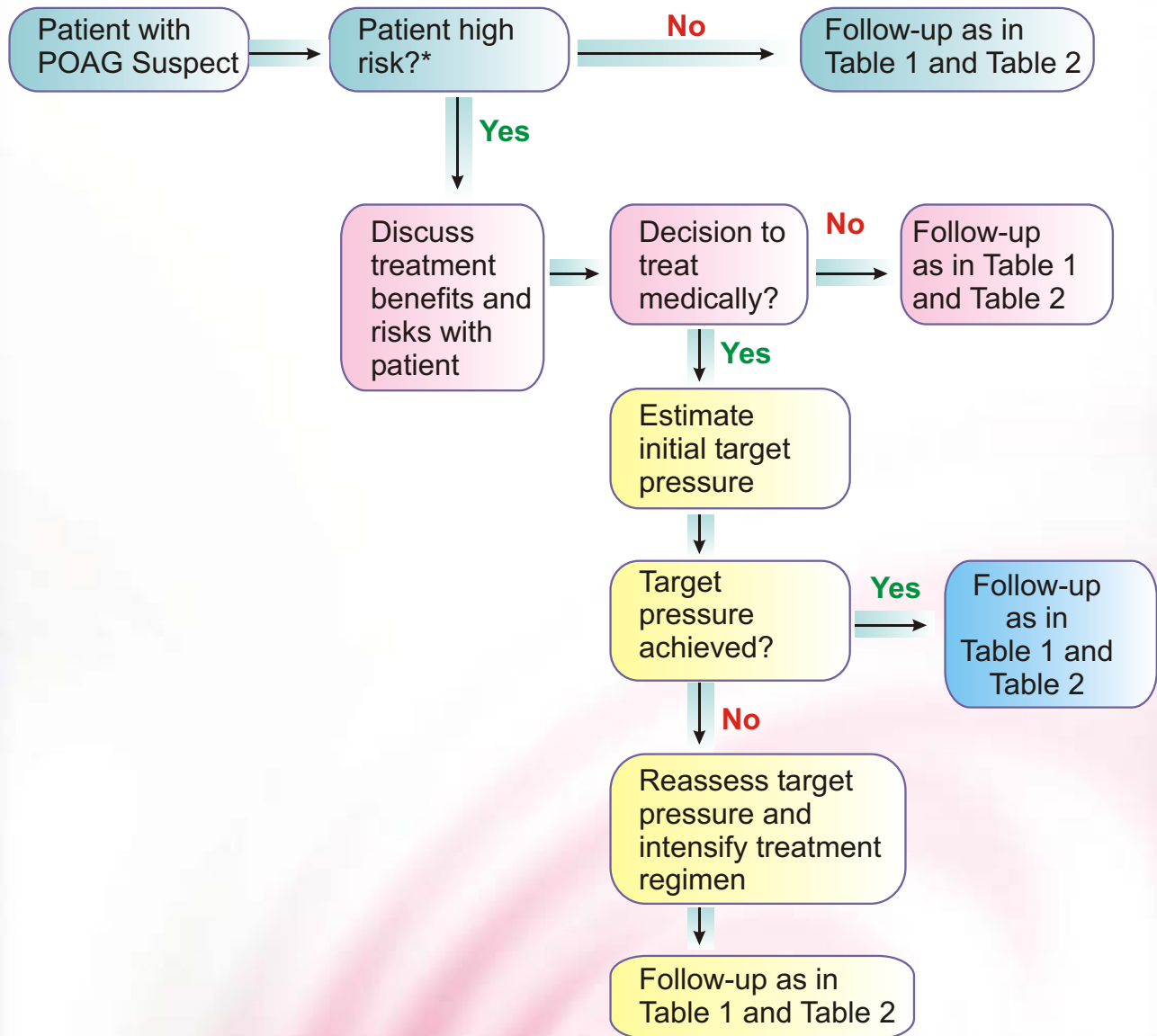


Cipla Quick Cards

No. 2

Practical pointers on MANAGEMENT OF OCULAR HYPERTENSION



* High-risk glaucoma suspects...



Management of ocular hypertension

* High-risk glaucoma suspects include patients who have one or more of the following characteristics:

- Elevated intraocular pressure repeatedly measured in the high 20s or above (mm Hg by applanation tonometry)
- African descent
- Thinner central corneal thickness
- Advancing age
- Family history of glaucoma
- Optic nerve head or nerve fiber layer findings suggestive of early glaucomatous damage (in the absence of other recognizable causes)
- The presence of additional ocular or systemic risk factors (eg, diabetes mellitus, systemic hypertension, cardiovascular disease, myopia, migraine headache, and vasospasm) that might place the optic nerve at increased vulnerability to glaucomatous damage.

Table 1. Recommended Guidelines for Follow-up

Treatment	Target IOP achieved	High risk	Follow-up Interval
No	n/a	no	6-18 months
No	n/a	yes	3-12 months
Yes	yes	yes	3-12 months
Yes	no	yes	2 days - 4 months

Table 2. Recommended Frequency of Optic Nerve Head and Visual Field Evaluation

Treatment	Target IOP achieved	High risk	Follow-up Interval (months)
No	n/a	no	6-18
No	n/a	yes	6-12
Yes	yes	yes	6-12
Yes	no	yes	3-12

Reference: <http://www.aaio.org/aaioeducation/library>

Cipla

DORZOX
EYE DROPS

9pm Eye Drops
Maltenecont 0.002%
pm to pm IOP Control

Cipla Ltd.
Mumbai Central
Mumbai 400 008